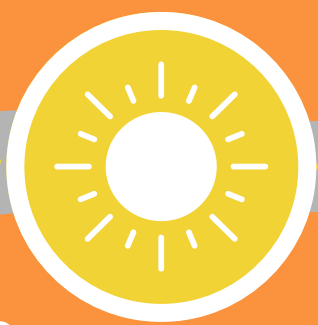


The Parking Lot Heat Crisis



Parking lots are one of the worst **perpetrators** of **Urban Heat Island** effects

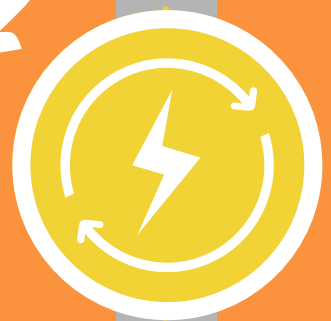
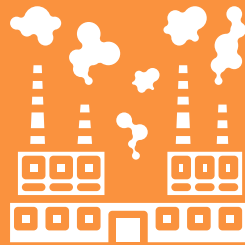


Parking lots **waste** immense portions of **land** which *could* be used for **more productive** purposes



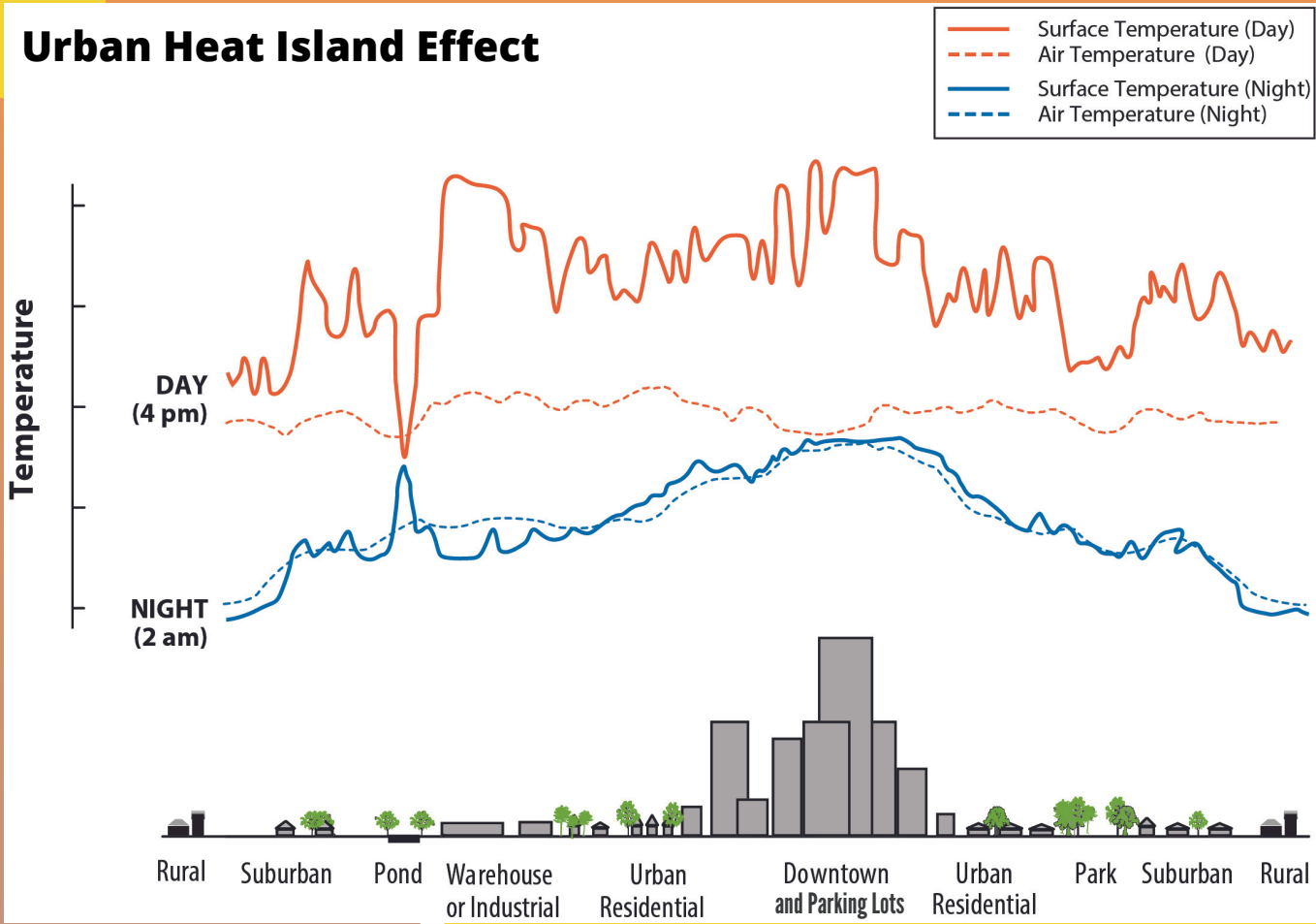
Urban Heat Islands

A **phenomenon** occurring in **cities** with large **concentrations** of **dark surfaces** such as asphalt, pavement, and tar; causing increased temperatures, resulting in **high energy costs**, air pollution, and **heat-related illnesses**.





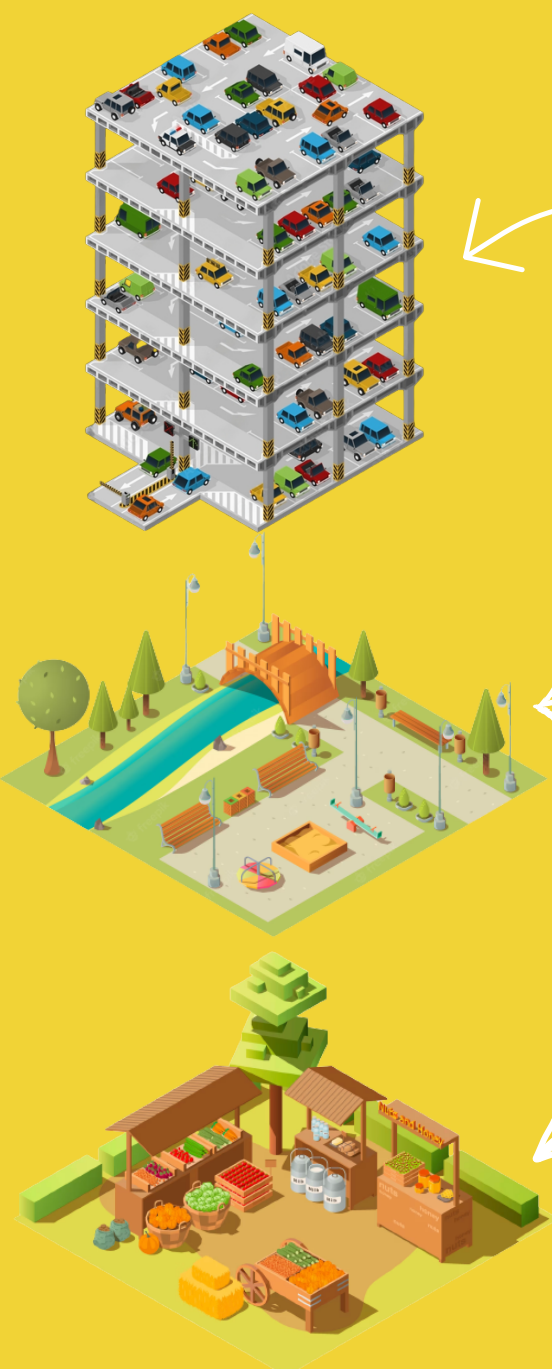
Urban Heat Island Effect



Although **extreme heat** is present in all environments, the areas impacted the most are **downtown districts** and especially **parking lots**.



By **concentrating large parking lots** into a parking garage, the land can be **reused** for parks and **green infrastructure**.

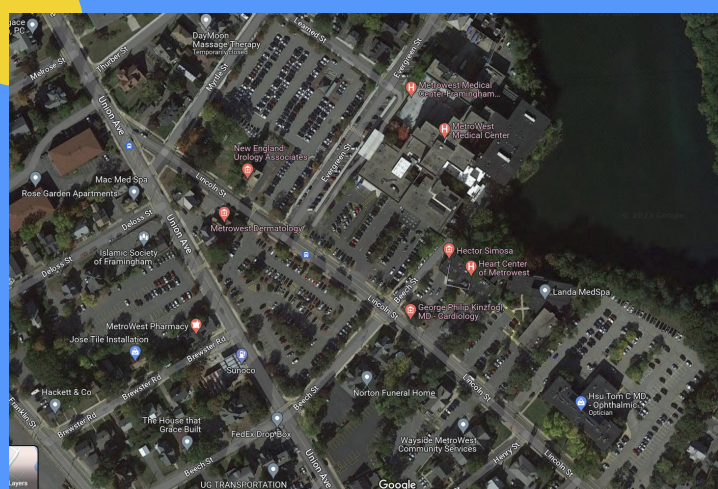


To combat Urban Heat Islands, a severe rework of how we envision parking is required.



This Is Our Vision By 2050, Framingham will:

- Replaced **75%** of parking concentrations of **300+ spots** with a solar-canopied **parking garages**.
- Added **solar canopies** to **50%** of parking lots with concentrations of **100+ spots**.



Downtown Framingham: Metrowest Medical Center

Enacting our solution would significantly increase renewable energy production and **free up land** to be used more productively.



You can **take action** in helping us **spread the word!**



Share this infographic with your friends, and learn more on the **EPA website**.

