

Roosevelt

Park

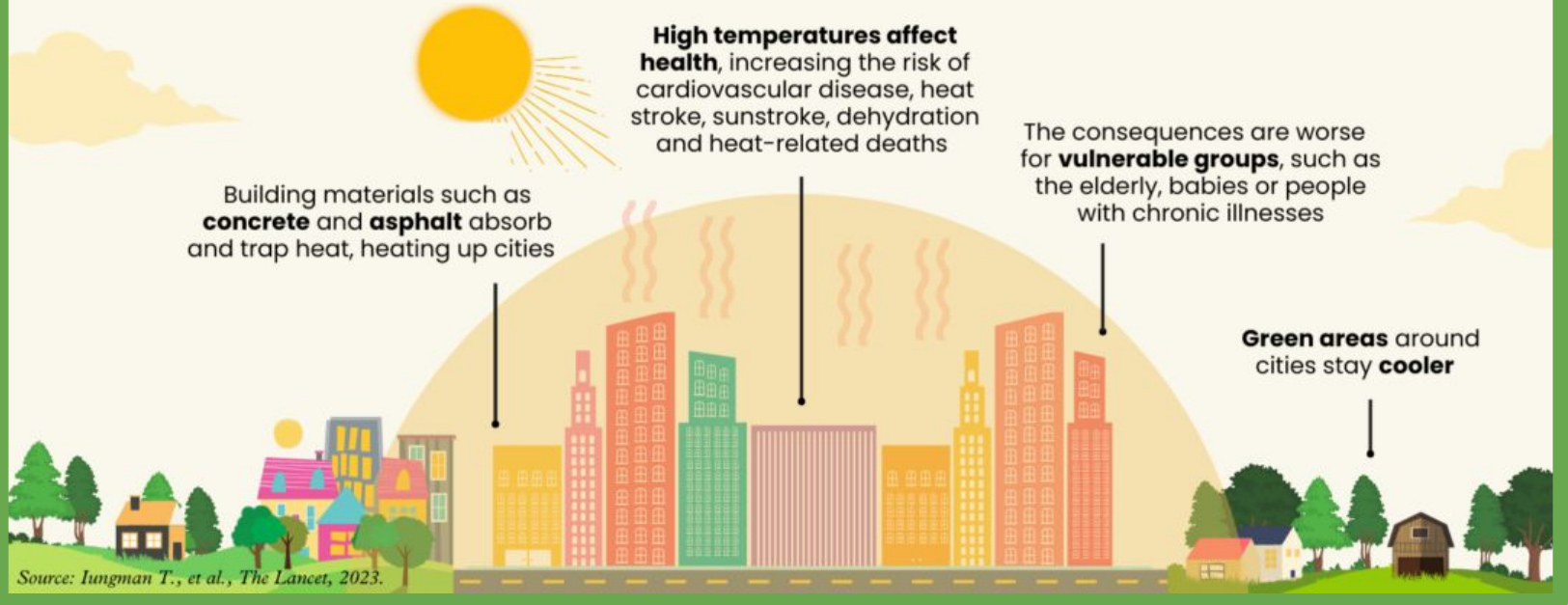
Redesign



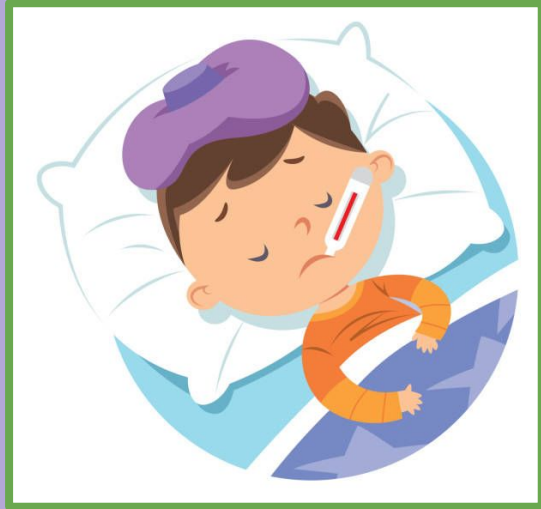
Team Green Means Go!

The urban heat island effect

Refers to the **increase in temperature** in **urban environments** compared to surrounding areas.



Risks of Urban Heat Islands



Child Vulnerability

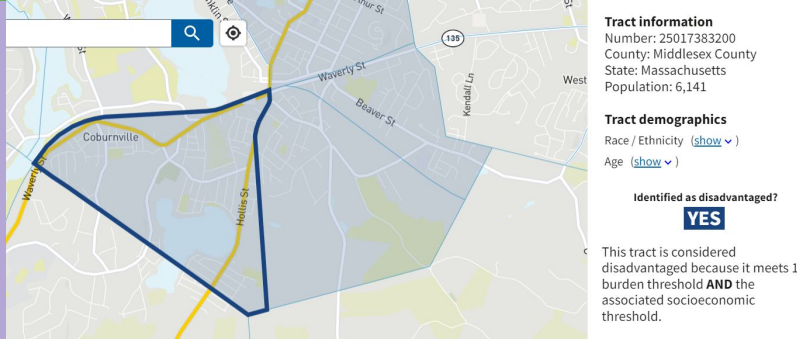


Heat-related Illness

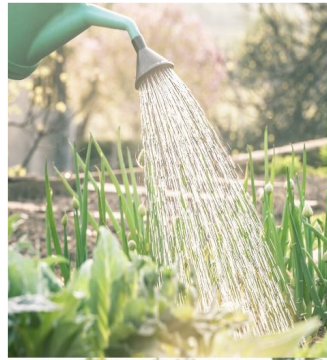


Mental Health Impact

Coburnville/Tripoli & Roosevelt Park



Vision



Community Garden

Heat-Resistant Playground

More Trees

Benefits of the Redesign



Cooler Temperatures



Healthier Community



Beauty

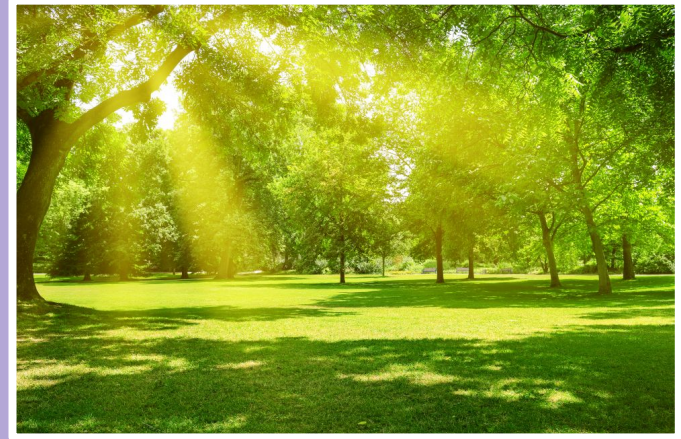
Redesign Layout



Recommendations for City of Framingham



Consult surrounding neighborhoods



Increase green space

Sources

Heat waves -

<https://www.epa.gov/climate-indicators/climate-change-indicators-heat-waves>

Urban heat islands - <https://www.epa.gov/heatislands/learn-about-heat-islands>

Extreme heat - https://www.cdc.gov/climateandhealth/pubs/extreme-heat-final_508.pdf

Cooler temperatures study -

<https://www.epa.gov/sites/default/files/2015-05/documents/treesandvegcompendium.pdf>

Health benefits of going outside -

<https://www.fs.usda.gov/features/wellness-benefits-great-outdoors>

Community Statistics -

https://www.mapc.org/wp-content/uploads/2022/04/MW-Climate_Climate-Equity-Memo_20220314.pdf

Acknowledgements

We would like to thank Framingham State University and the Christa McAuliffe Center for Integrated Science Learning for sharing space, staff, and resources.

We are grateful to the PETM program funders, including the MA STEM Pipeline Fund/Massachusetts Executive Office of Education, MassHire Metro South / West Workforce Board, MassHire Central Workforce Board, Blackstone Valley Education Foundation, YouthWorks - Commonwealth Corporation, the Institute of Museum and Library Services, the Sudbury Foundation, Main Street Group Foundation, and Framingham Cultural Council, Marlborough Cultural Council, and Milford Cultural Council, local agencies which are supported by the Mass Cultural Council, a state agency.

Finally, we would like to thank those individuals who contributed their time and expertise, including Michael Barros-Smith, Angie Alberto Escobar, Erin Creel, Brian Herr, Amy Johnston, Barry Keppard, Kat Kobylt, Shawn Luz, Alexa Mogck, Jerusha Nelson-Peterman, Jim Newman, Cara Pina, Sasha Shyduroff, Charlie Sisitsky, and Larry Stoodt.